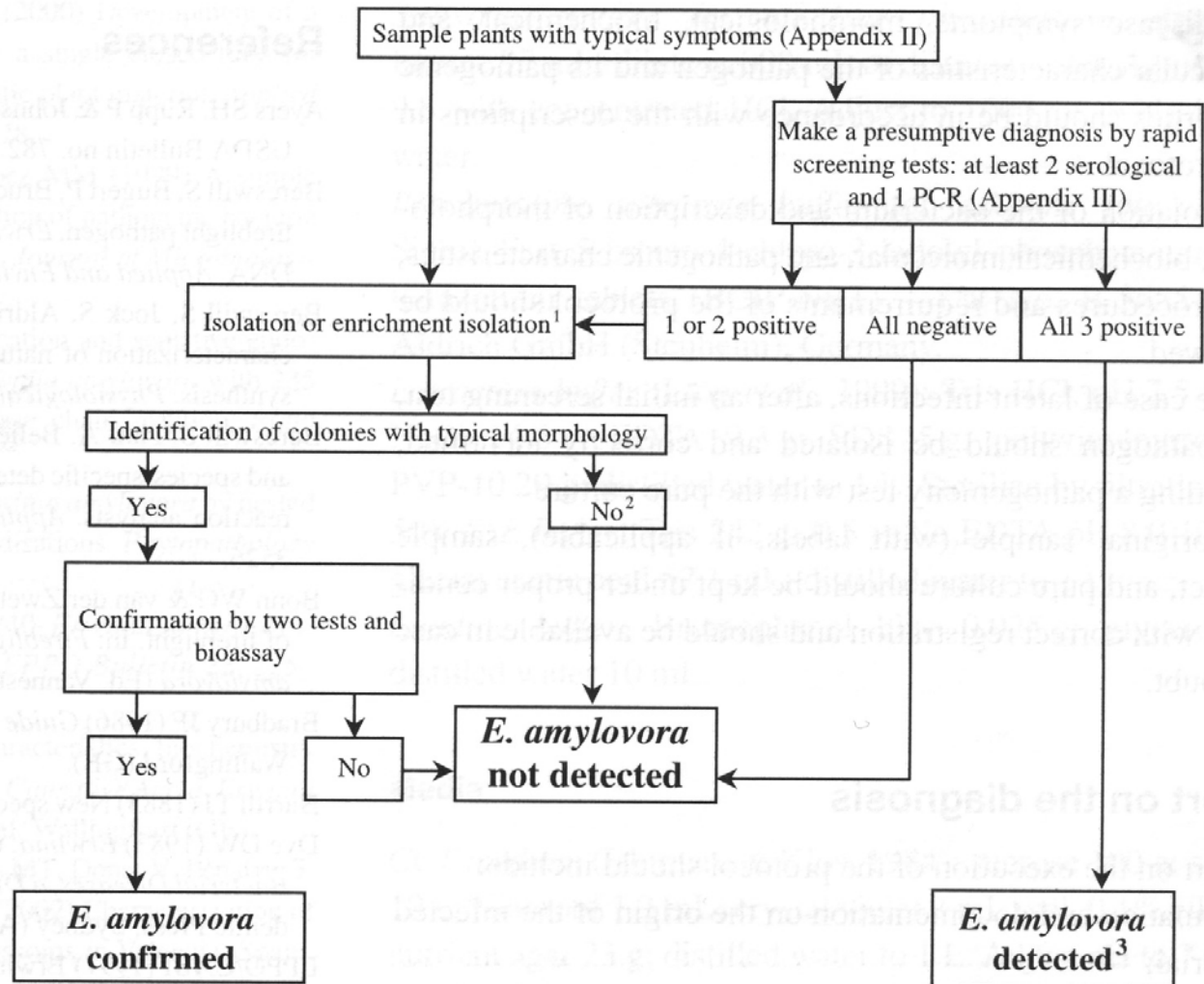


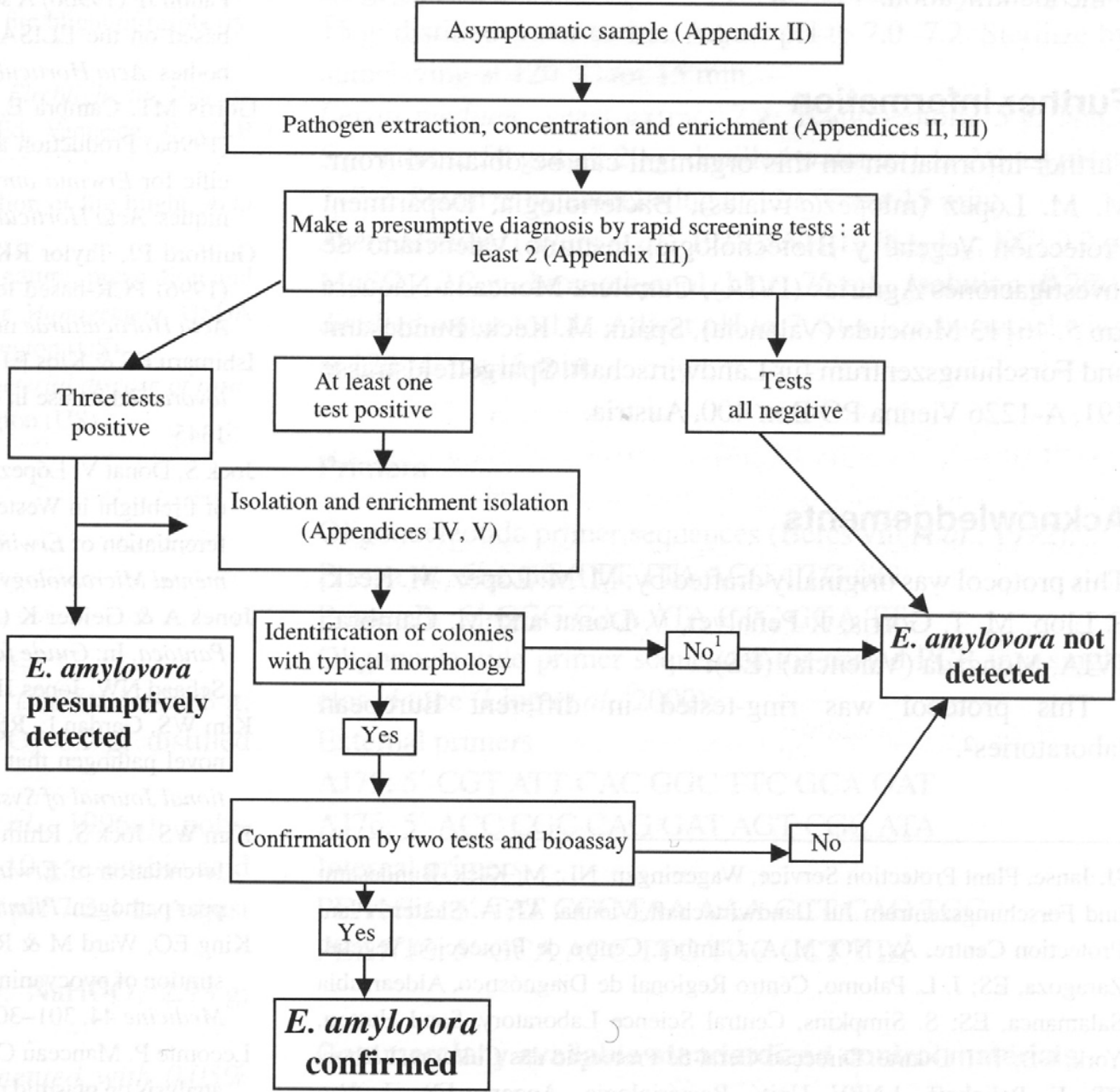
# **La diagnosi dei batteri da quarantena**

# *Erwinia amylovora*



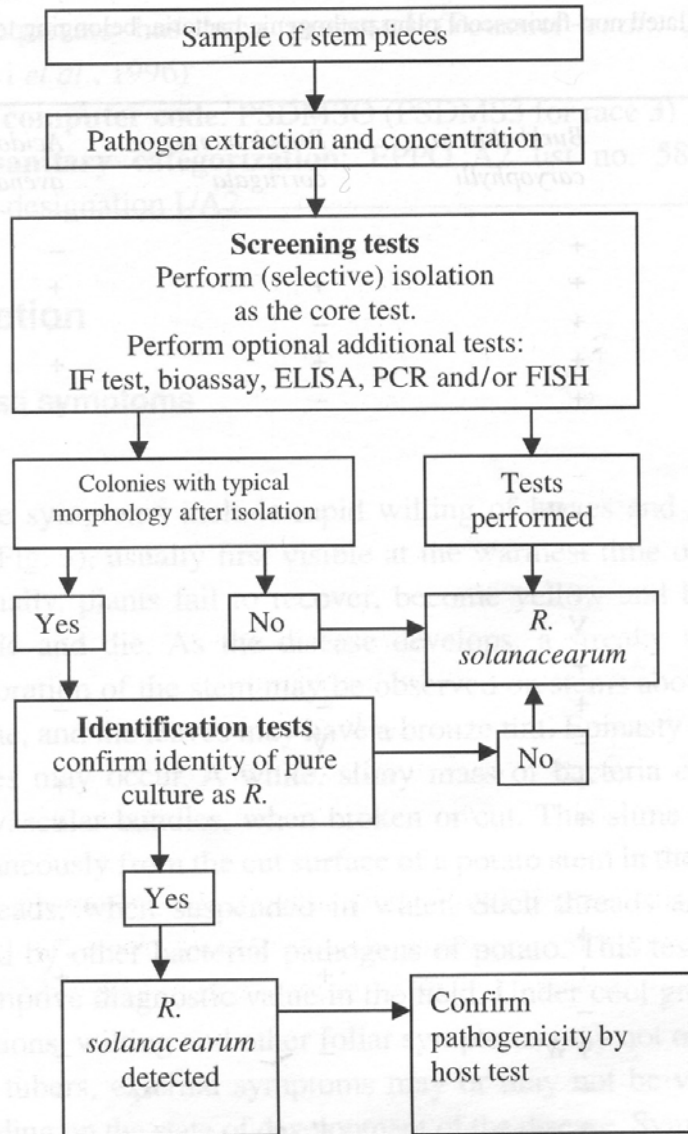
1. The pathogen is usually easily isolated from symptomatic plant material by dilution plating as described in Appendix V, but enrichment may sometimes be needed (Appendix IV).
2. Culturing may fail for samples from material at an advanced stage of infection, due to competition or overgrowth by saprophytic bacteria. If disease symptoms are typical but the isolation test is negative, then the isolation should be attempted again.
3. Detection by rapid screening test is suitable for routine surveys. In the case of new findings, confirmation by isolation is needed.

**Erwinia amylovora**

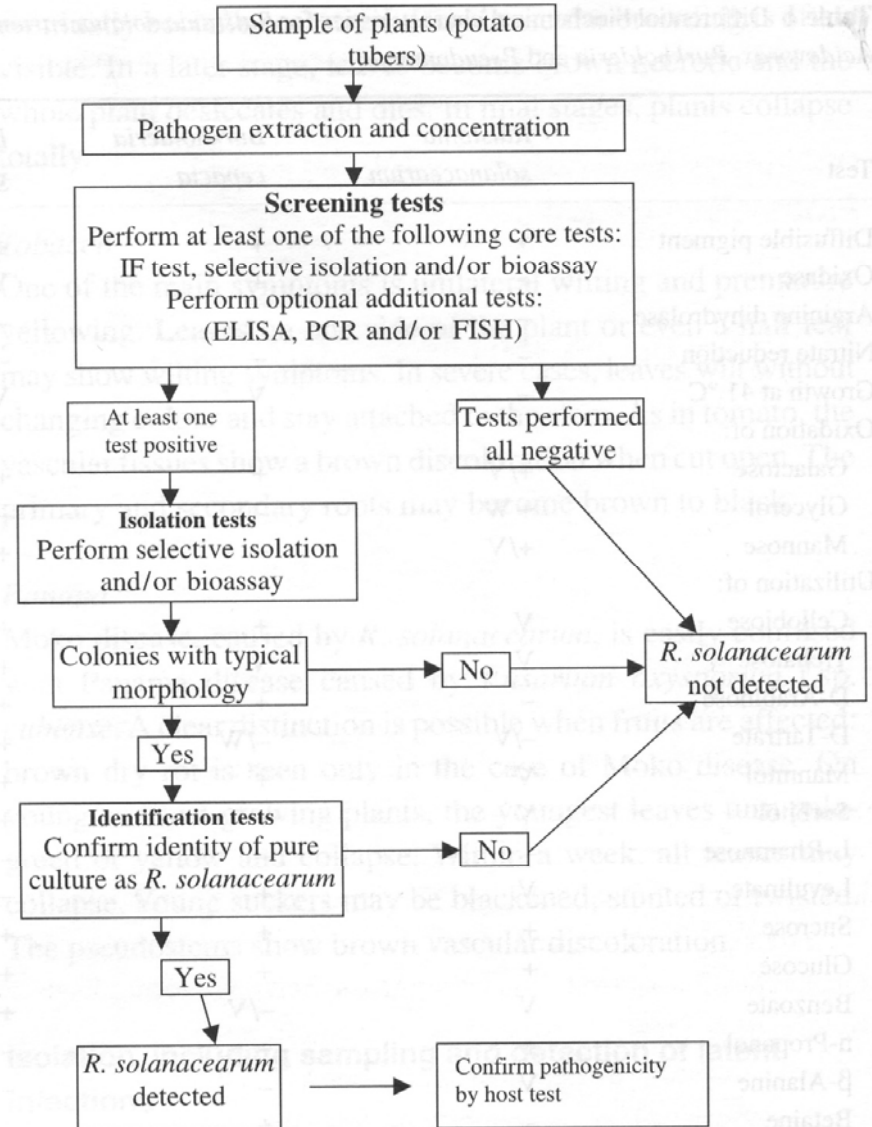


# Ralstonia solanacearum

## Campione sintomatico



## Campione asintomatico



# *Xylella fastidiosa*

